

PART OF S. 1/2 OF SEC. 30, T.6 N., R.1 W., S.L.B & M.

22

# BROOKLYN ADDITION

BLOCKS 10,11,12,13

IN OGDEN CITY

SCALE 1" = 50'

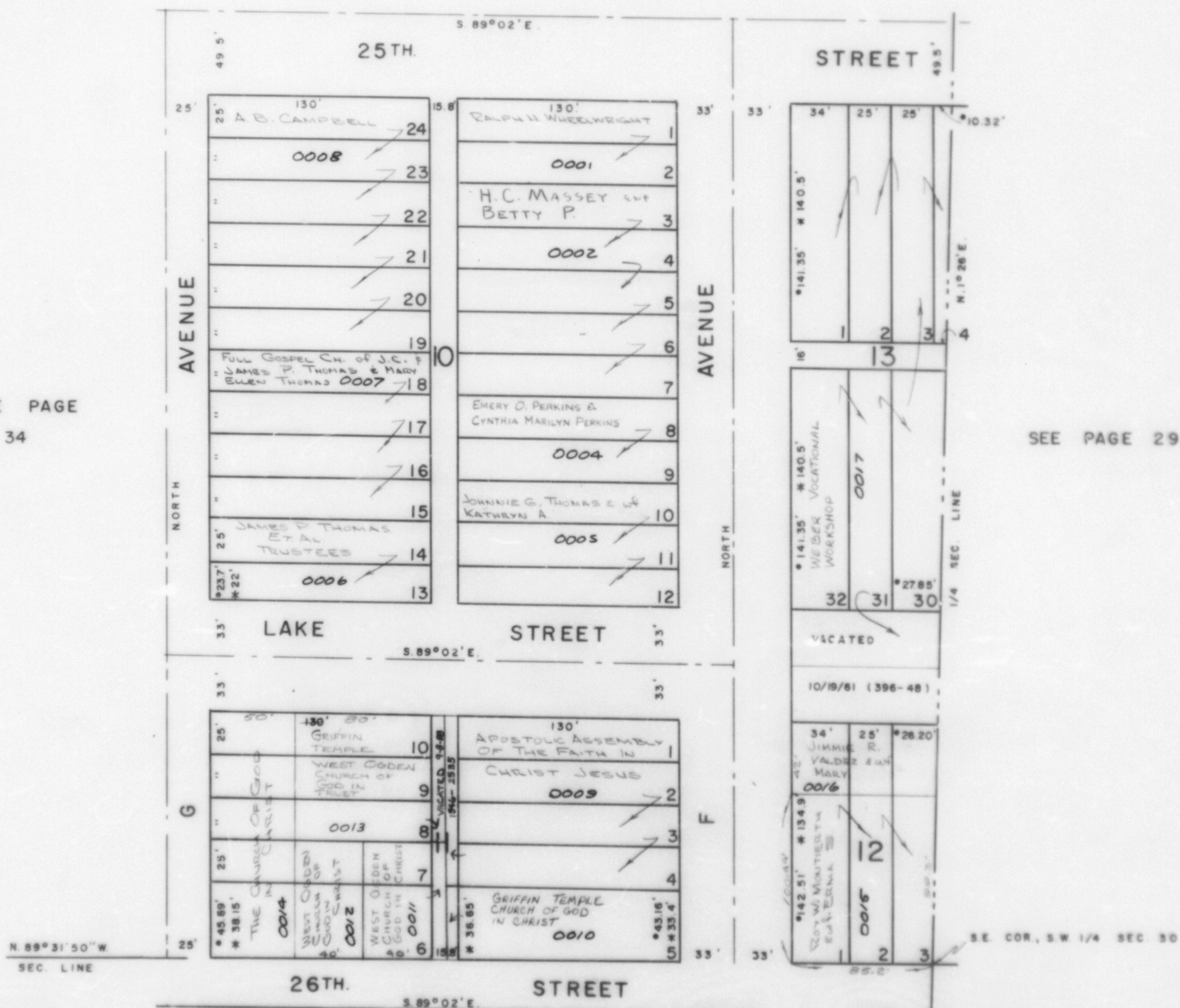
TAXING UNIT : 25

PREFIX : 14 - 022

SEE PAGE 21

SEE PAGE  
34

SEE PAGE 29



SEE PAGE 44

SEE PAGE 45

\* OGDEN CITY ENG. DEPT. PLATS  
\* ORIG. DED. PLAT